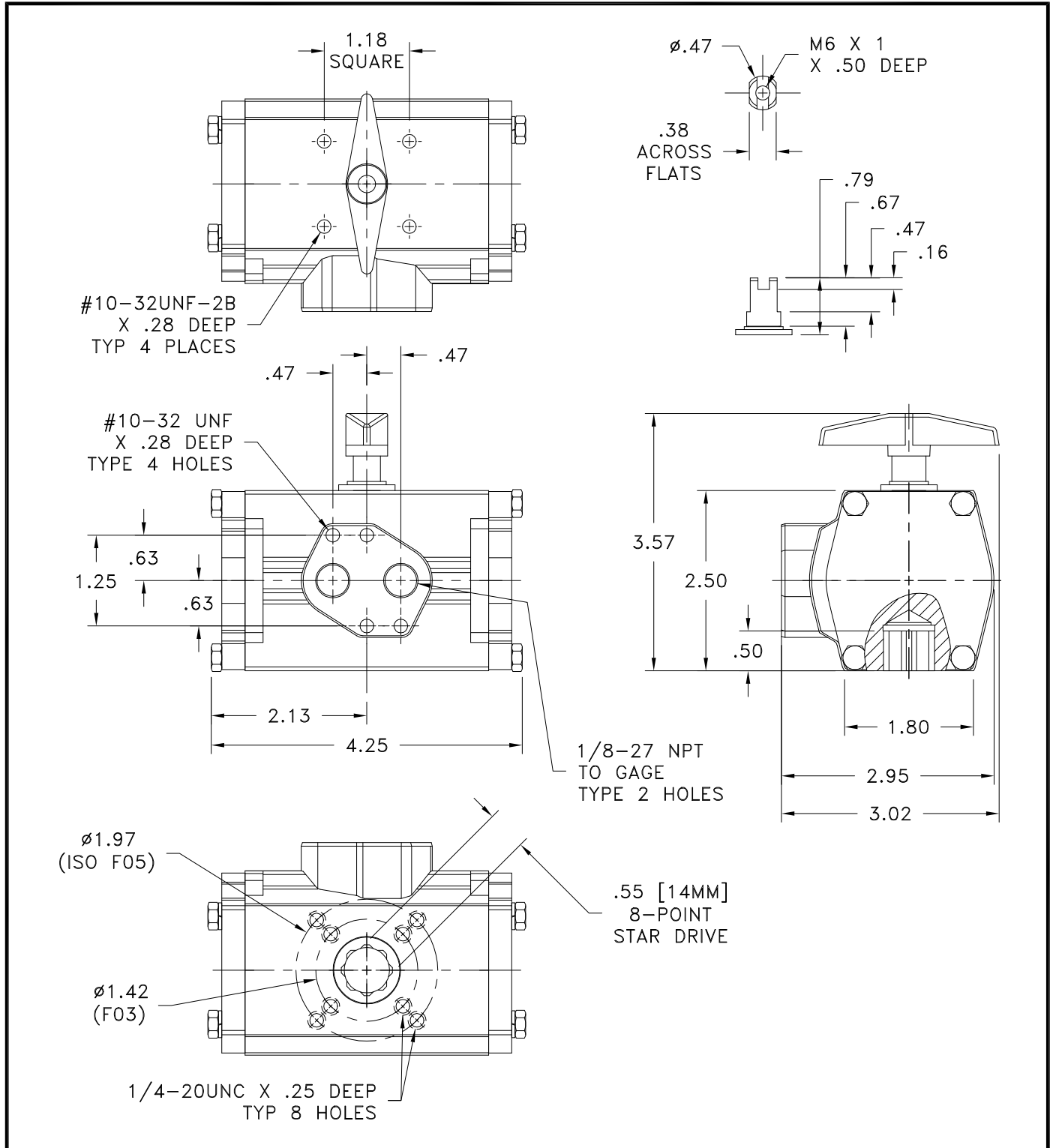


ATTENTION

THIS DOCUMENT IS VALID IF AND ONLY IF YOU PERSONALLY DOWNLOADED IF FROM WWW.BRAY.COM
IF YOU RECEIVED THIS DOCUMENT FROM ANY OTHER SOURCE, PLEASE TAKE INTO CONSIDERATION THAT ALTERATIONS
COULD HAVE BEEN MADE, FOR AN ORIGINAL COPY, PLEASE CONTACT BRAY VALVE AT 281-894-5454



Notes: SERIES 90 ACTUATORS (DOUBLE ACTING)
CAN NOT BE CONVERTED TO SINGLE ACTING.
FOR SINGLE ACTING USE SERIES 93

Customer/Project _____

Inq./P.O. No. _____

Bray Order No. _____

Certified Correct By _____ Date _____

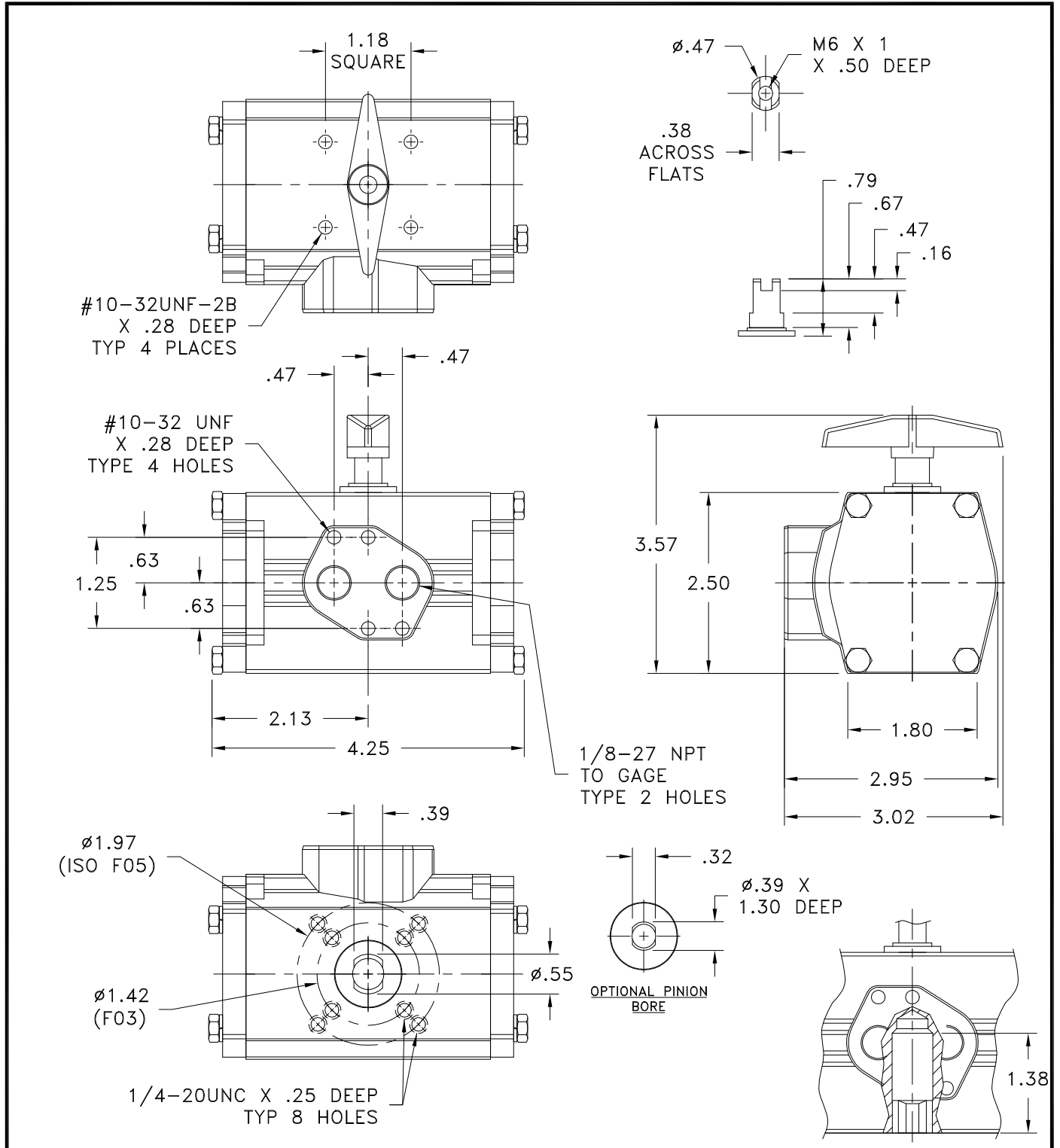
DIMENSION (INCHES)
SERIES 90 SIZE 48, PNEUMATIC ACTUATOR
WITH 8-POINT STAR DRIVE, STAINLESS STEEL

Bray CONTROLS
A Division of BRAY INTERNATIONAL, Inc.

SHEET	REV.
1 OF 1	2
DRAWING NO.	
ES11A-0402	

ATTENTION

THIS DOCUMENT IS VALID IF AND ONLY IF YOU PERSONALLY DOWNLOADED IF FROM WWW.BRAY.COM
IF YOU RECEIVED THIS DOCUMENT FROM ANY OTHER SOURCE, PLEASE TAKE INTO CONSIDERATION THAT ALTERATIONS
COULD HAVE BEEN MADE, FOR AN ORIGINAL COPY, PLEASE CONTACT BRAY VALVE AT 281-894-5454



Notes: SERIES 90 ACTUATORS (DOUBLE ACTING)
CAN NOT BE CONVERTED TO SINGLE ACTING.
FOR SINGLE ACTING USE SERIES 93

Customer/Project _____

Inq./P.O. No. _____

Bray Order No. _____

Certified Correct By _____ Date _____

DIMENSION (INCHES)
SERIES 90 SIZE 48, PNEUMATIC ACTUATOR
WITH DOUBLE 'D' DRIVE, STAINLESS STEEL

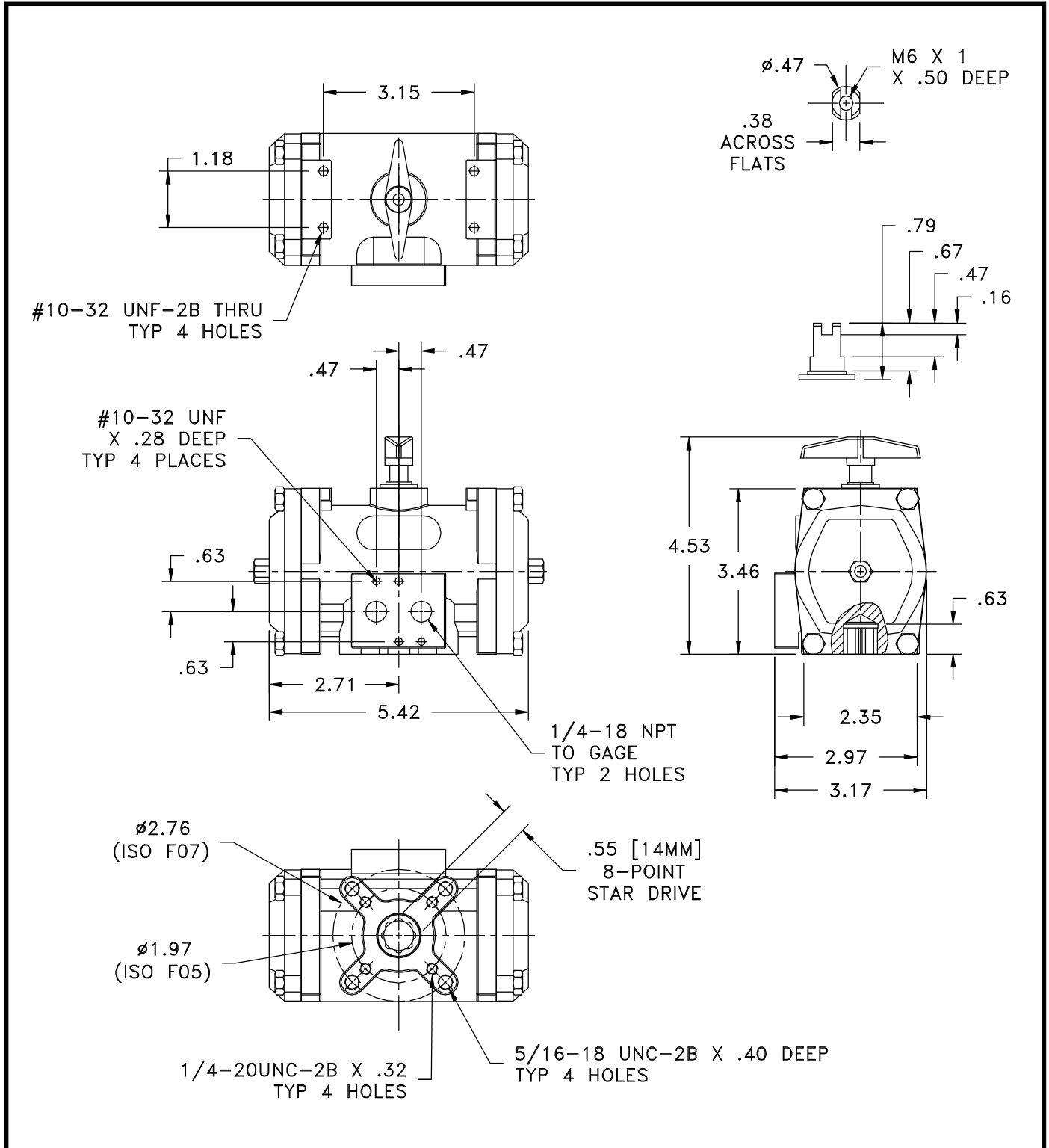
Bray CONTROLS
A Division of BRAY INTERNATIONAL, Inc.

SHEET	REV.
1 OF 1	RFP

DRAWING NO.
ES11A-0500

ATTENTION

THIS DOCUMENT IS VALID IF AND ONLY IF YOU PERSONALLY DOWNLOADED IT FROM WWW.BRAY.COM
 IF YOU RECEIVED THIS DOCUMENT FROM ANY OTHER SOURCE, PLEASE TAKE INTO CONSIDERATION THAT ALTERATIONS
 COULD HAVE BEEN MADE. FOR AN ORIGINAL COPY, PLEASE CONTACT BRAY VALVE AT 281-894-5454



Valve Size _____ Pressure Rating _____
 Fig. Drilling _____
 Customer/Project _____
 Inq./P.O. No. _____
 Bray Order No. _____
 Certified Correct By _____ Date _____

DIMENSION (INCHES)
 SERIES 90 SIZE 63, PNEUMATIC ACTUATOR
 WITH 8-POINT STAR DRIVE, STAINLESS STEEL

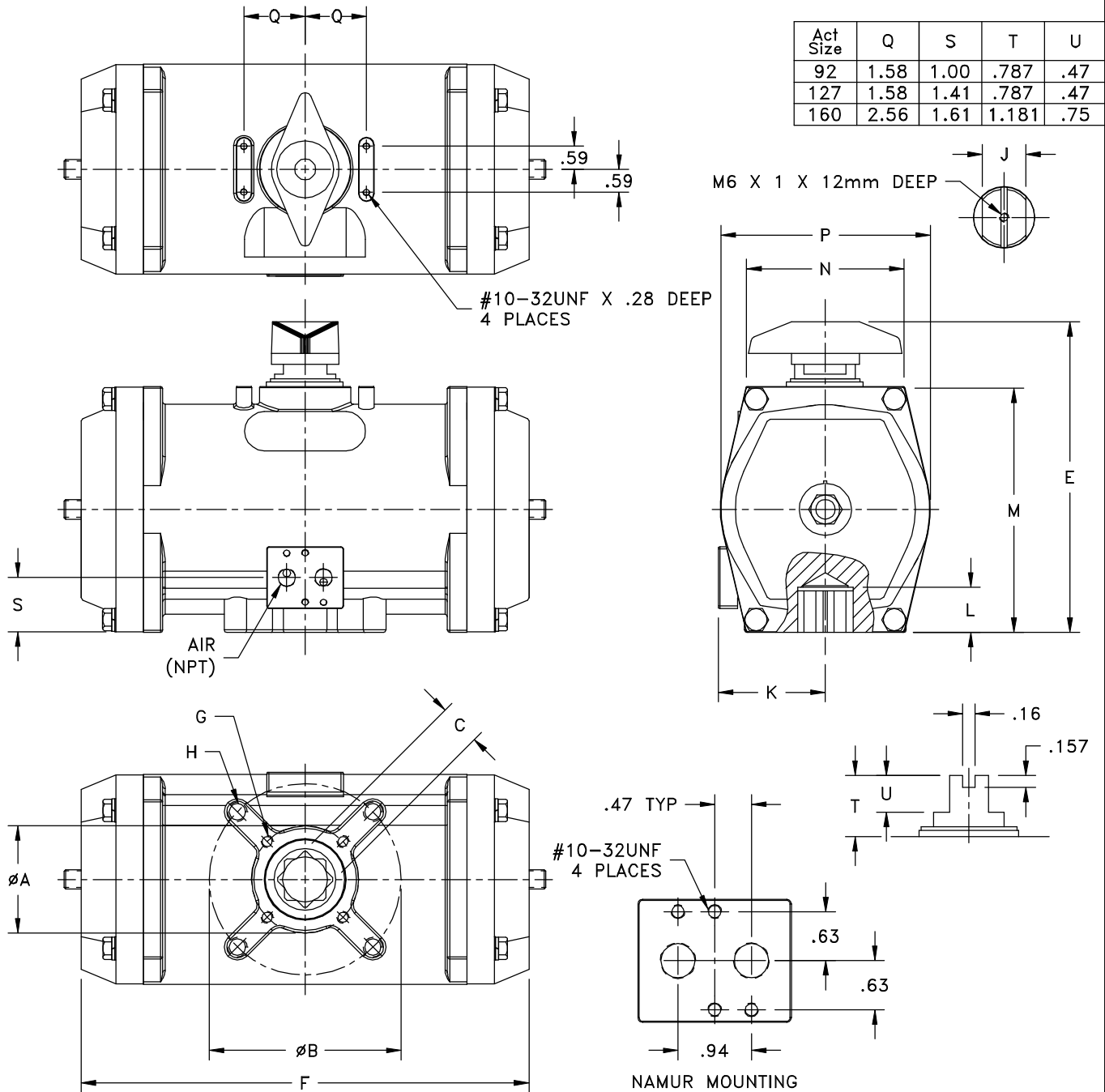
Bray CONTROLS
A Division of BRAY INTERNATIONAL, Inc.

SHEET 1 OF 1	REV. RFP
DRAWING NO. ES11A-0403	

ATTENTION

THIS DOCUMENT IS VALID IF AND ONLY IF YOU PERSONALLY DOWNLOADED IF FROM WWW.BRAY.COM
 IF YOU RECEIVED THIS DOCUMENT FROM ANY OTHER SOURCE, PLEASE TAKE INTO CONSIDERATION THAT ALTERATIONS
 COULD HAVE BEEN MADE, FOR AN ORIGINAL COPY, PLEASE CONTACT BRAY VALVE AT 281-894-5454

Act Size	AIR	A	B	C		E	F	G (UNC-2B)	H (UNC-2B)	J	K	L	M	N	P
				inches	metric										
92	1/4	1.97	2.76	.67	17mm	5.77	8.15	1/4-20UNC	5/16-18UNC	.50	.75	2.18	4.61	2.76	3.94
127	1/4	2.76	4.92	1.06	27mm	7.73	9.94	5/16-18UNC	1/2-13UNC	1.12	1.16	2.75	6.32	4.07	5.39
160	1/4	-	4.92	1.06	27mm	9.20	14.76	-	1/2-13UNC	1.12	1.16	3.20	7.79	4.34	6.77



NOTES: SERIES 90 ACTUATORS (DOUBLE ACTING) AND SERIES 91 (SINGLE ACTING) ARE DIMENSIONALLY THE SAME.

Customer/Project _____
 Inq./P.O. No. _____
 Bray Order No. _____
 Certified Correct By _____ Date _____

DIMENSIONS (Inches)
 SERIES 90/91 SIZES 92, 127 & 160
 PNEUMATIC ACTUATOR
 WITH 8-POINT STAR DRIVE, STAINLESS STEEL

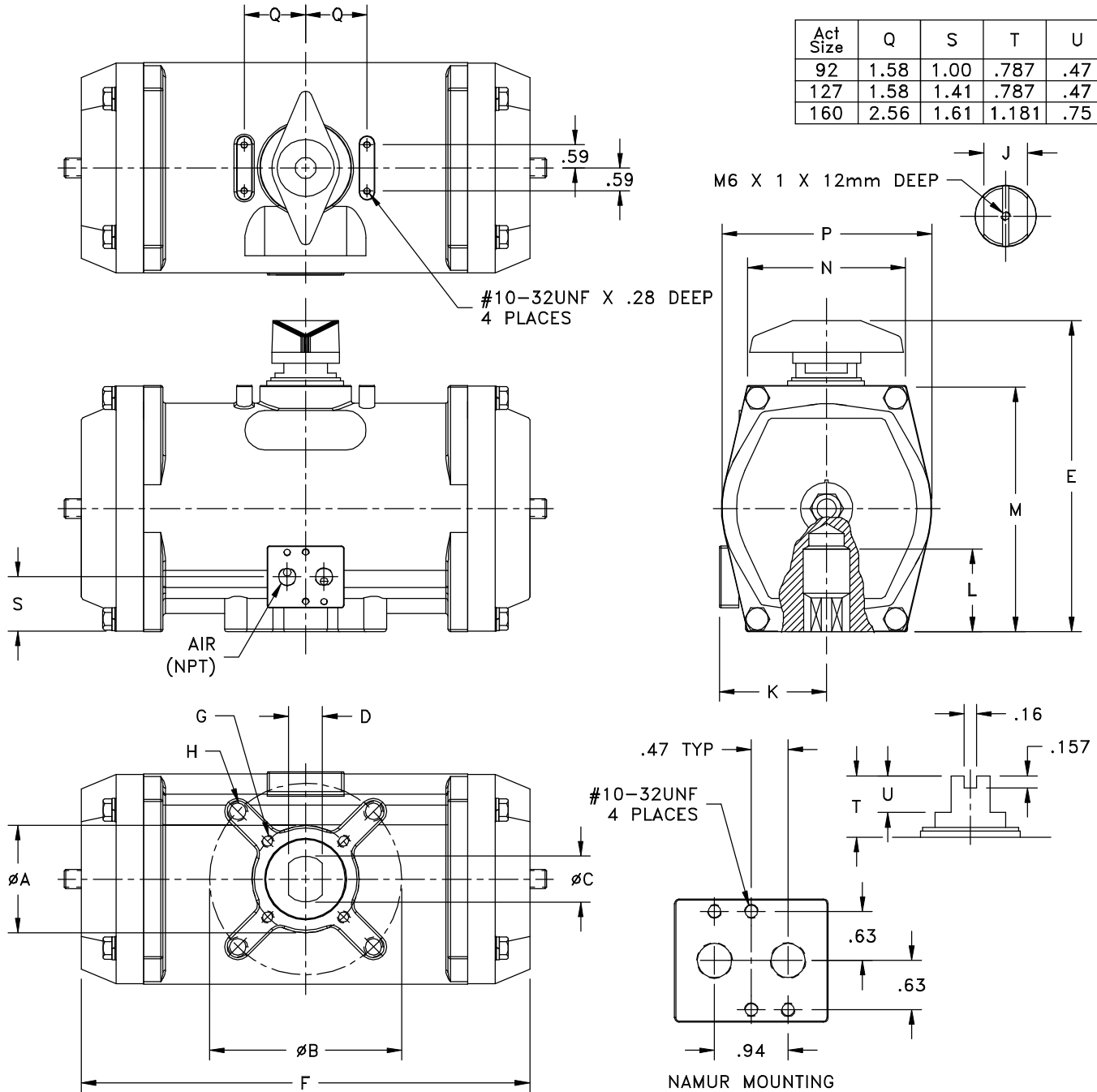
Bray CONTROLS
 A Division of BRAY INTERNATIONAL, Inc.

SHEET 1 OF 1 REV. RFP
 DRAWING NO. ES11A-0404

ATTENTION

THIS DOCUMENT IS VALID IF AND ONLY IF YOU PERSONALLY DOWNLOADED IF FROM WWW.BRAY.COM
 IF YOU RECEIVED THIS DOCUMENT FROM ANY OTHER SOURCE, PLEASE TAKE INTO CONSIDERATION THAT ALTERATIONS
 COULD HAVE BEEN MADE, FOR AN ORIGINAL COPY, PLEASE CONTACT BRAY VALVE AT 281-894-5454

Act Size	AIR	A	B	C	D	E	F	G (UNC-2B)	H (UNC-2B)	J	K	L	M	N	P
92	1/4	1.97	2.76	.75	.51	5.77	8.15	1/4-20UNC	5/16-18UNC	.50	.75	1.38	4.61	2.76	3.94
127	1/4	2.76	4.92	1.18	.87	7.73	9.94	5/16-18UNC	1/2-13UNC	1.12	1.16	2.11	6.32	4.07	5.39
160	1/4	-	4.92	1.18	.87	9.20	14.76	-	1/2-13UNC	1.12	1.16	2.11	7.79	4.34	6.77



Act Size	Q	S	T	U
92	1.58	1.00	.787	.47
127	1.58	1.41	.787	.47
160	2.56	1.61	1.181	.75

NOTES: SERIES 90 ACTUATORS (DOUBLE ACTING) AND SERIES 91 (SINGLE ACTING) ARE DIMENSIONALLY THE SAME.

DIMENSIONS (Inches)
 SERIES 90/91 SIZES 92, 127 & 160
 PNEUMATIC ACTUATOR
 WITH DOUBLE "D" DRIVE, STAINLESS STEEL

Customer/Project _____
 Inq./P.O. No. _____
 Bray Order No. _____
 Certified Correct By _____ Date _____

Bray CONTROLS
 A Division of BRAY INTERNATIONAL, Inc.

SHEET	REV.
1 OF 1	RFP
DRAWING NO.	
ES11A-0407	